



Volvo EWR150E

Mounting instructions
Art. 88610170, 88610171
Lamp holder for roof

Scan the QR code
for translated
instructions or visit
metec.ee/instructions



Weight: 16,4 kg
Time of mounting w/o wiring: 60 min

Required tools:



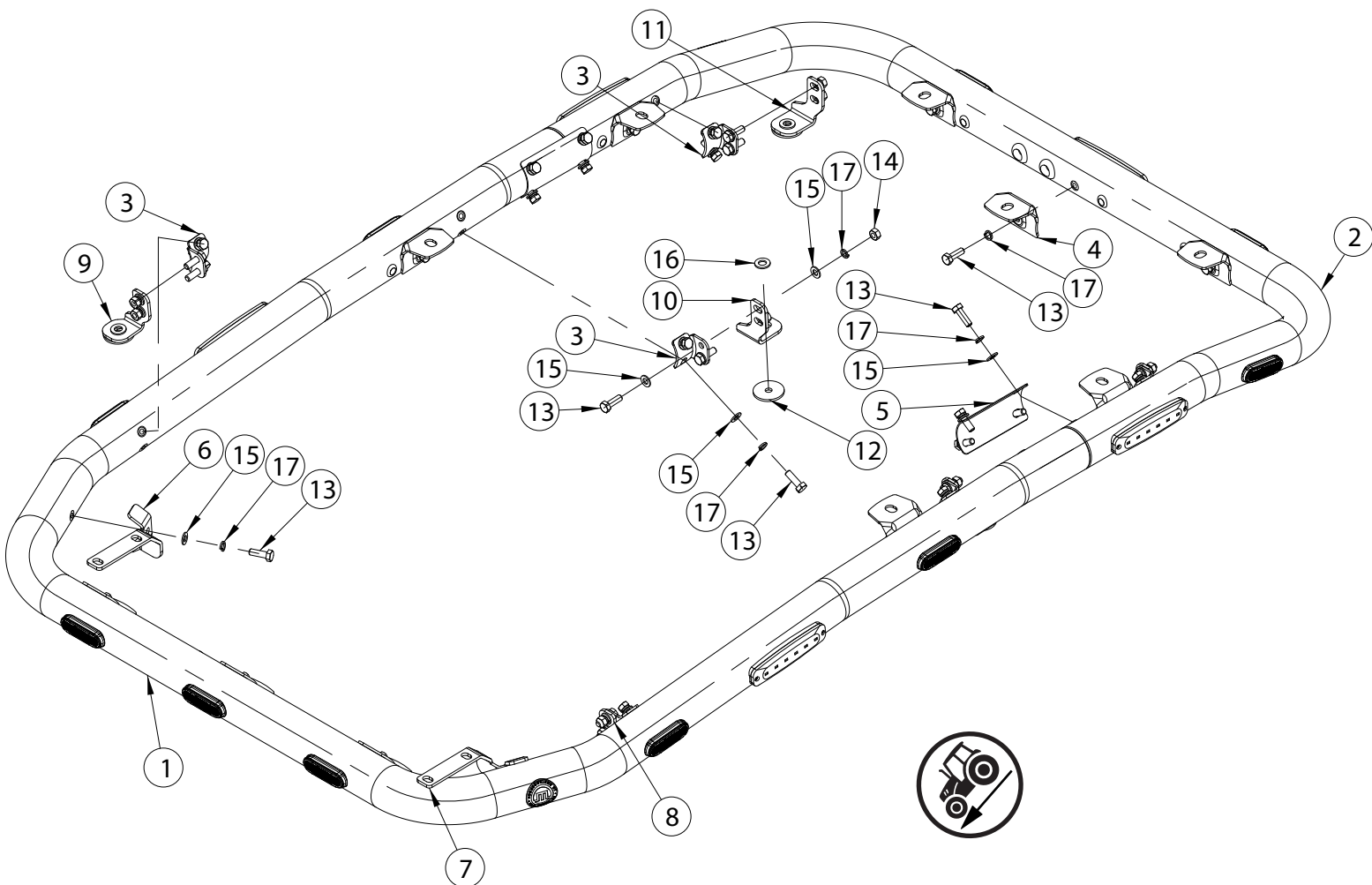
A2 / A4

M8 - 17 Nm

Volvo EWR150E

Art. 88610170, 88610171

Lamp holder for roof



Pos	Description	QTY
1.	Tube	1
2.	Tube	1
3.	Bolt bracket	6
4.	Lamp fixing bracket	10
5.	Tube bracket	2
6.	Bracket	1
7.	Bracket	1
8.	Bracket	1
9.	Bracket	1
10.	Bracket	2

Pos	Description	QTY
11.	Bracket	2
12.	Rubber washer	6
13.	Bolt M8x25 DIN933-A2	44
14.	Nut M8 DIN934-A2	12
15.	Flat Washer 8,4x16x1,6	46
16.	Flat Washer 10,5x20x2	6
17.	Spring washer A8	44

Volvo EWR150E

Art. 88610170, 88610171

Lamp holder for roof

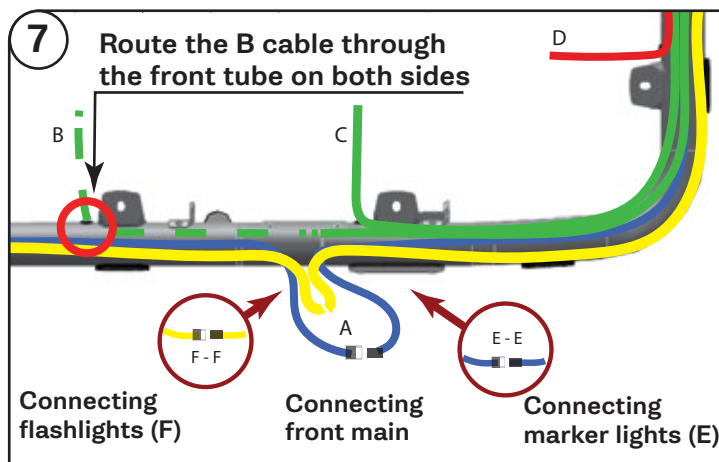
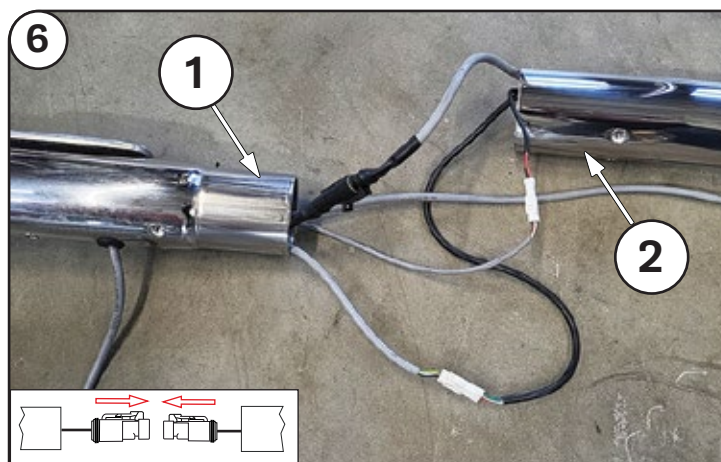
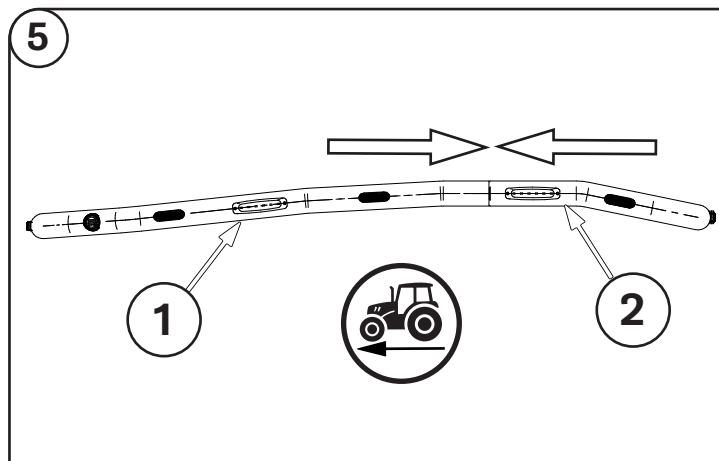
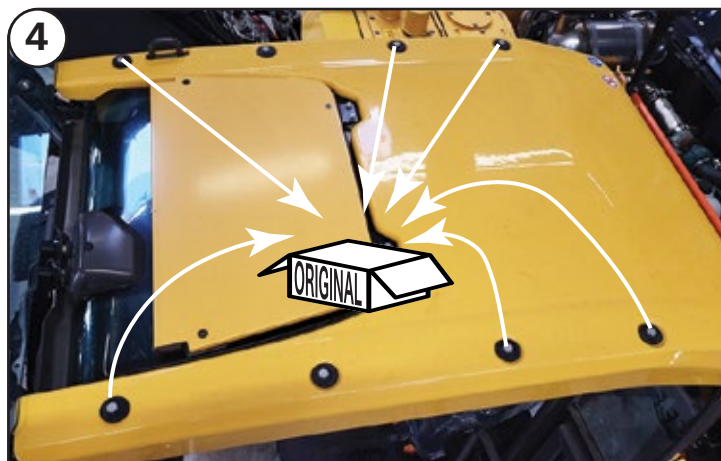
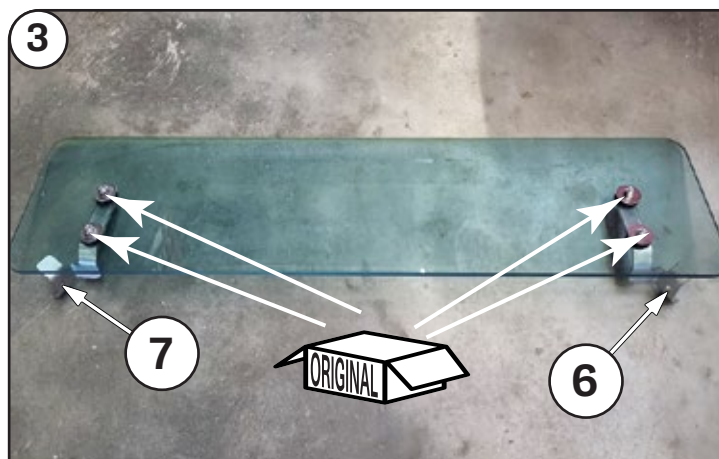
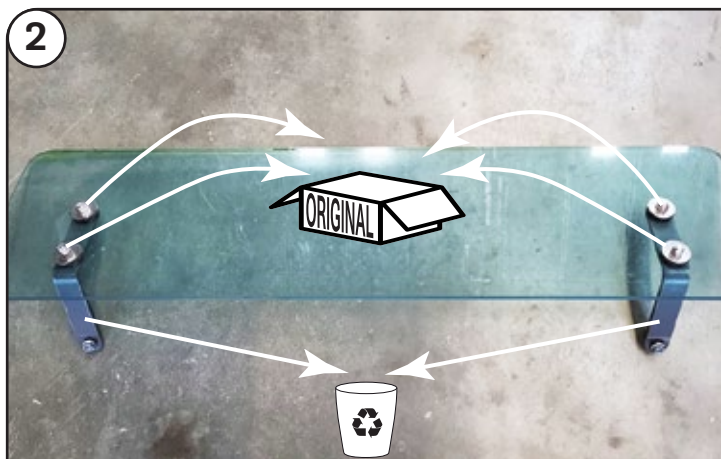
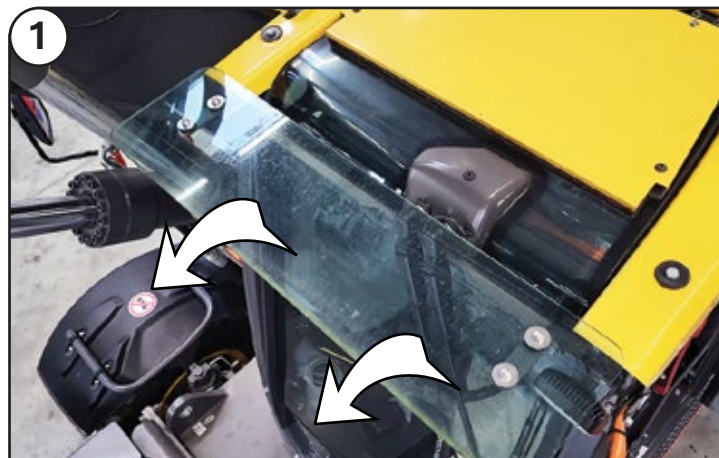
NB!



To prevent cold welding, use cold weld grease or engine oil



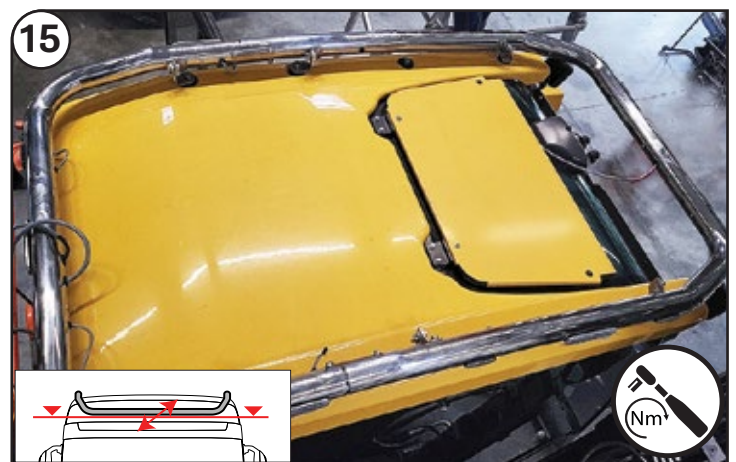
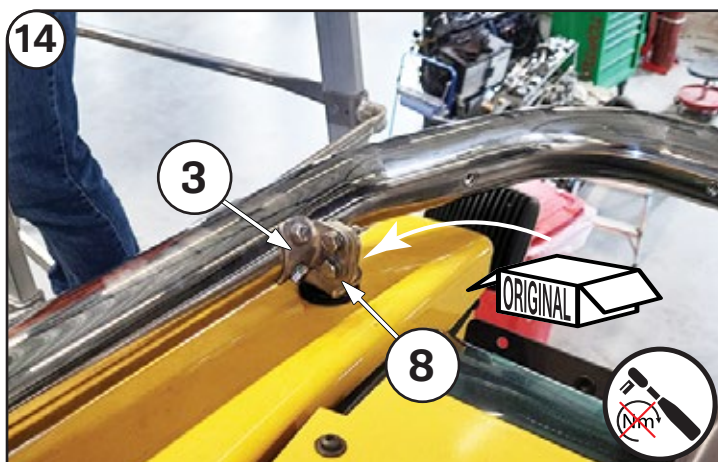
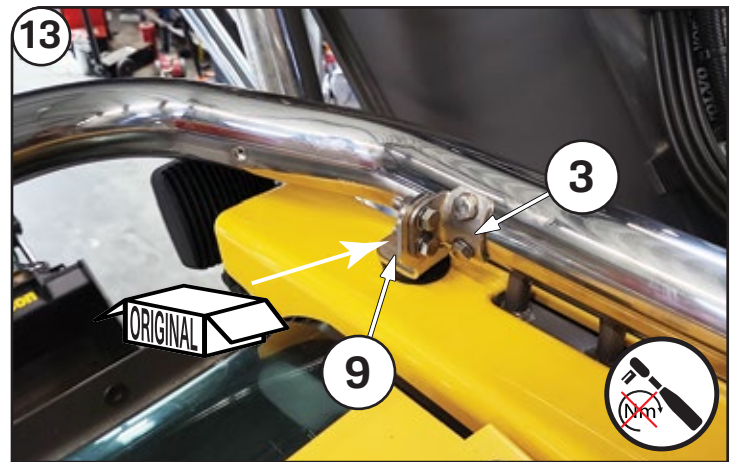
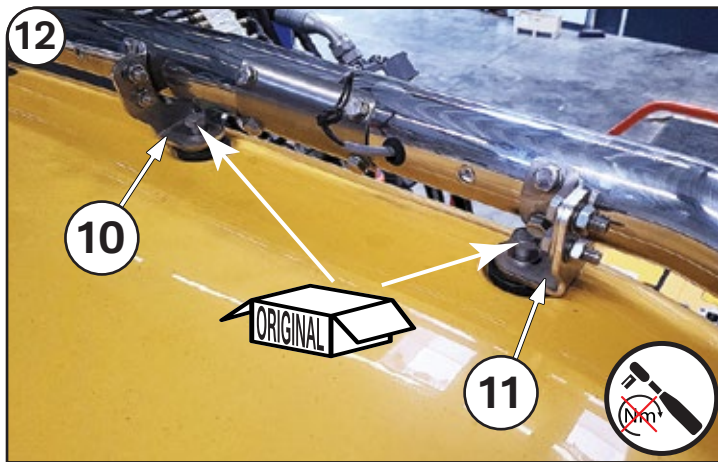
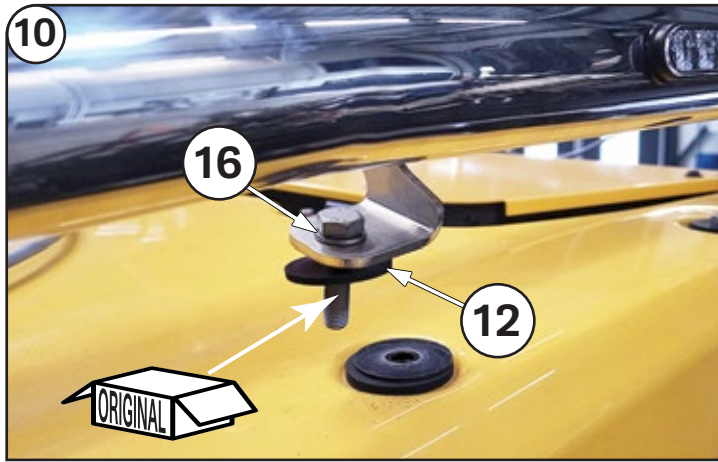
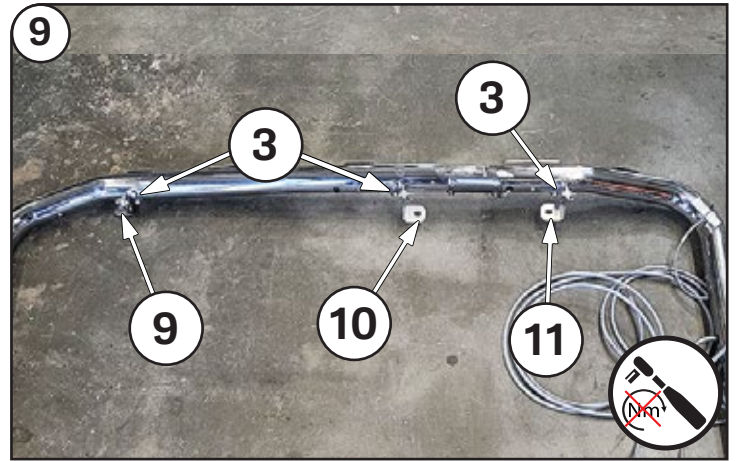
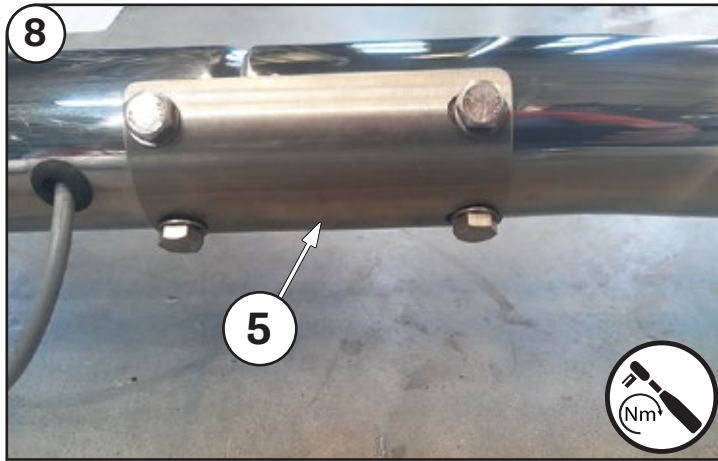
Installation of the lights must be carried out by a qualified electrician only



Volvo EWR150E

Art. 88610170, 88610171

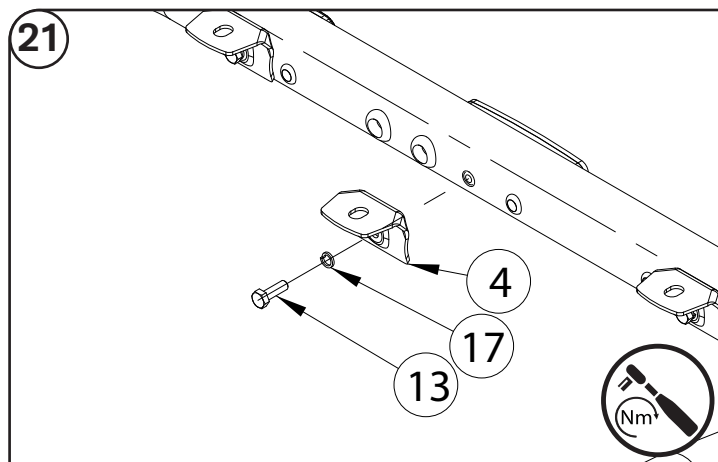
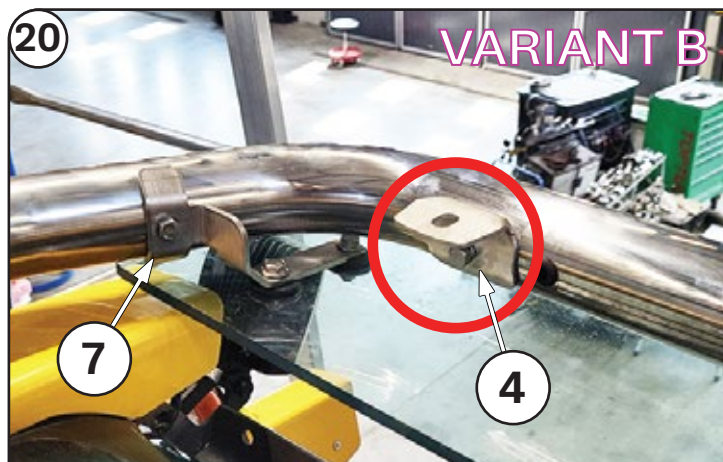
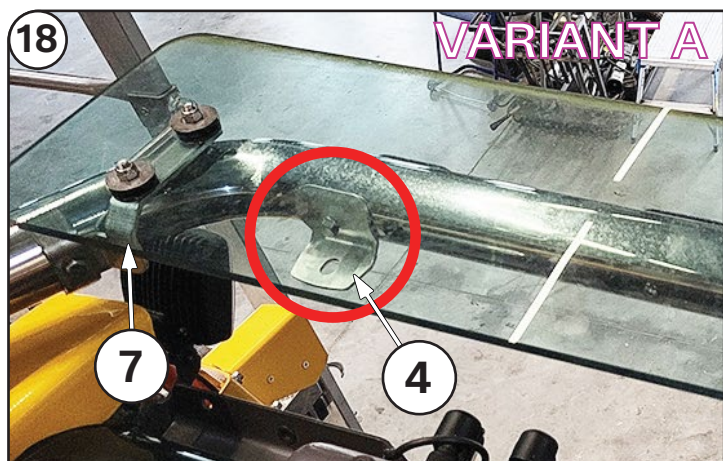
Lamp holder for roof



Volvo EWR150E

Art. 88610170, 88610171

Lamp holder for roof



Check and retighten the fasteners:
Road vehicles: every 10 000km
Heavy machinery: every 500 work hours



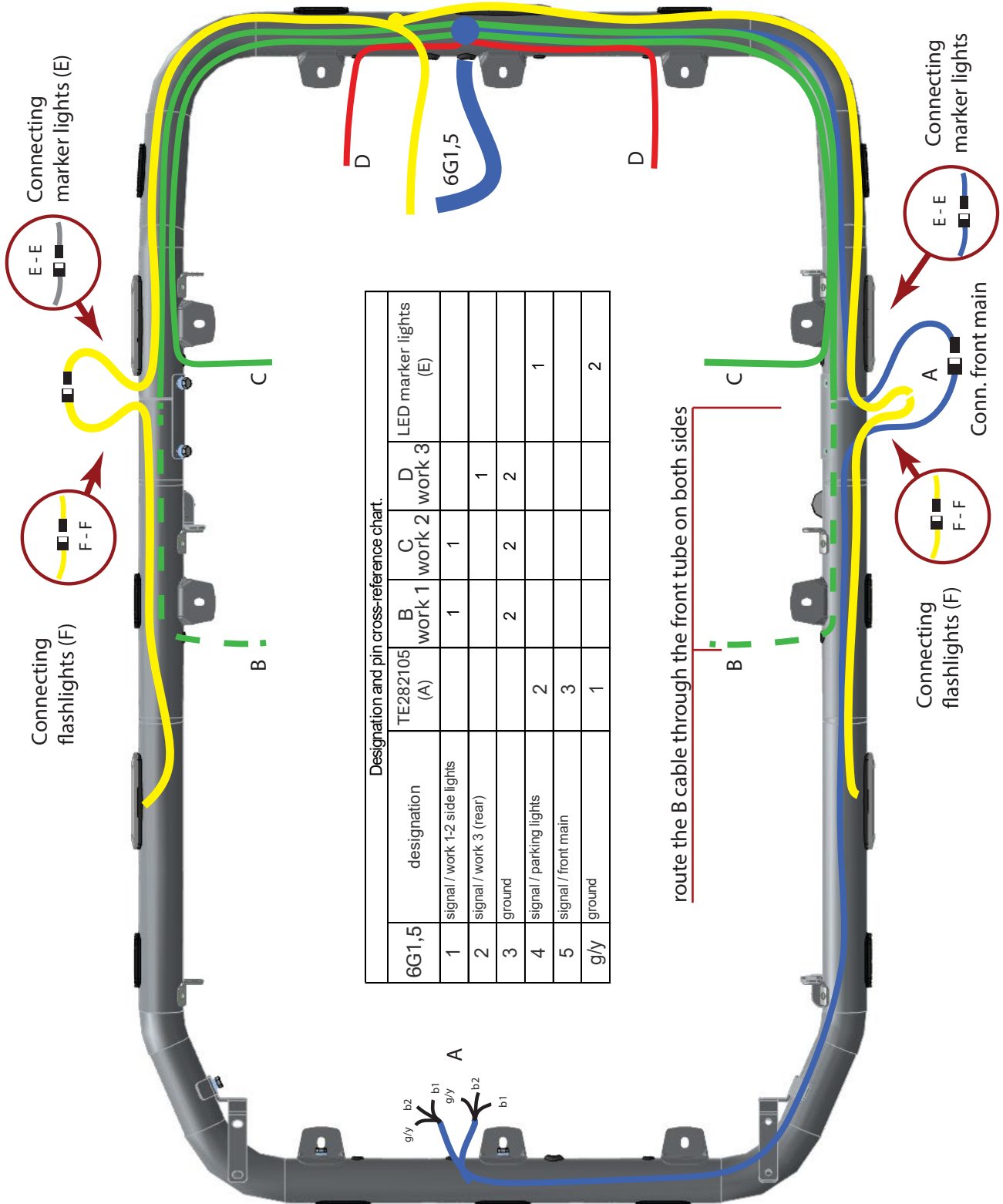
Clean the product twice a month to remove dirt, salt, and debris that may cause surface discoloration or rust spots

In case of any defects or damage to the METEC product upon delivery, contact the reseller or point of sale where you made your purchase for resolution

Volvo EWR150E

Art. 88610170, 88610171

Lamp holder for roof



Designation and pin cross-reference chart.

6G1,5	designation	TE282105 (A)	B work 1	C work 2	D work 3	LED marker lights (E)
1	signal / work 1-2 side lights		1	1		
2	signal / work 3 (rear)				1	
3	ground		2	2	2	
4	signal / parking lights	2				1
5	signal / front main	3				
g/y	ground	1				2

