



# Fendt 7

Mounting instructions  
Art. 887300  
Lamp holder

Scan the QR code  
for translated  
instructions or visit  
[metec.ee/instructions](http://metec.ee/instructions)



Weight: 17,7 kg  
Time of mounting w/o wiring: 60 min

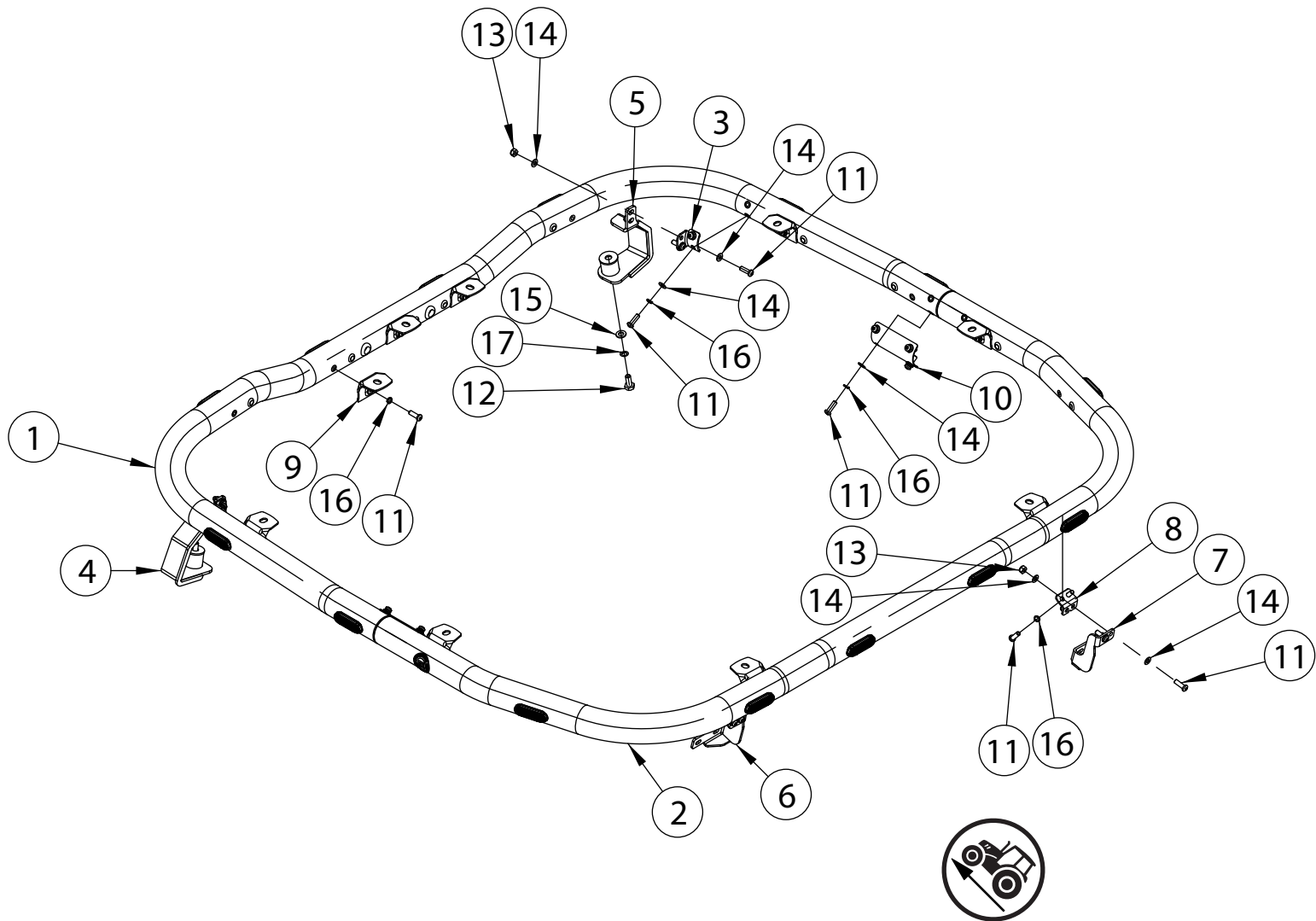
**Required tools:**



<b>A2 / A4</b>
<b>M8 - 17 Nm</b>
<b>M10 - 33 Nm</b>

# Fendt 7

Art. 887300  
Lamp holder



Pos	Description	QTY
1.	Front tube	1
2.	Rear tube	1
3.	Bolt bracket	2
4.	Bracket	1
5.	Bracket	1
6.	Bracket	1
7.	Bracket	1
8.	Bolt bracket	2
9.	Lamp fixing bracket	9
10.	Tube bracket	2

Pos	Description	QTY
11.	Bolt M8x25 DIN7380-A2	33
12.	Bolt M10x25 DIN933-A2	2
13.	Nut M8 DIN985-A2	8
14.	Flat washer 8,4x16x1,6	28
15.	Flat washer 10,5x20x2	2
16.	Spring washer A8	25
17.	Spring washer A10	2

# Fendt 7

Art. 887300  
Lamp holder

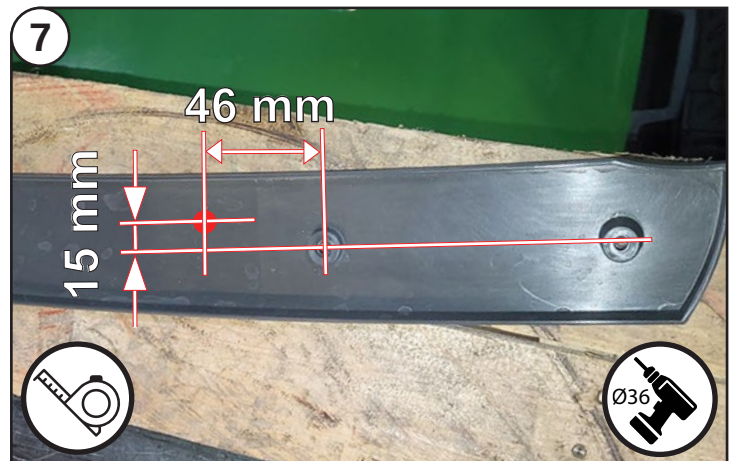
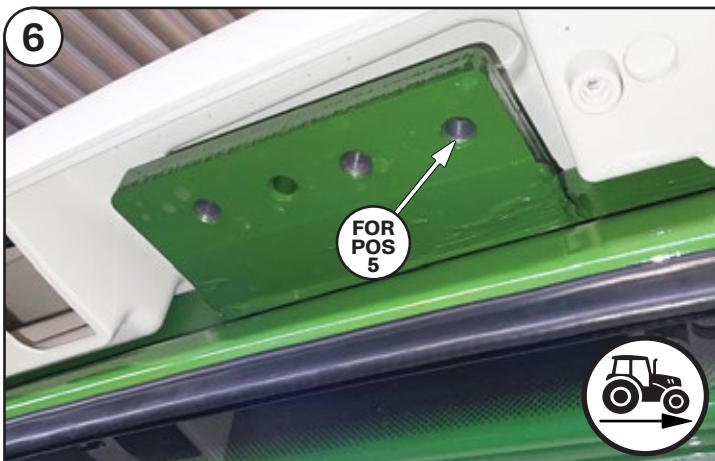
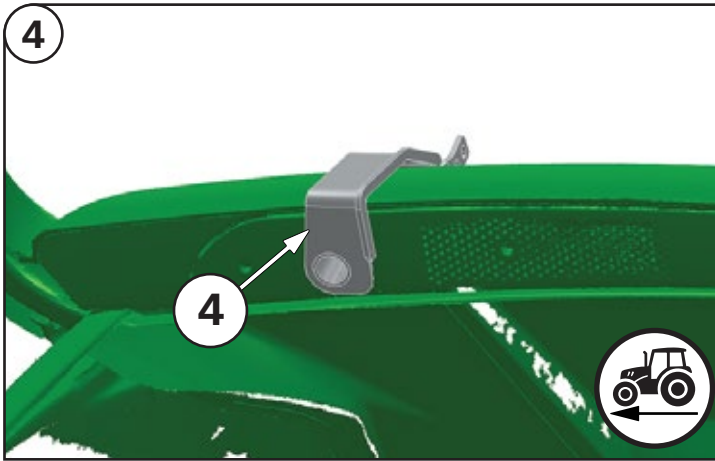
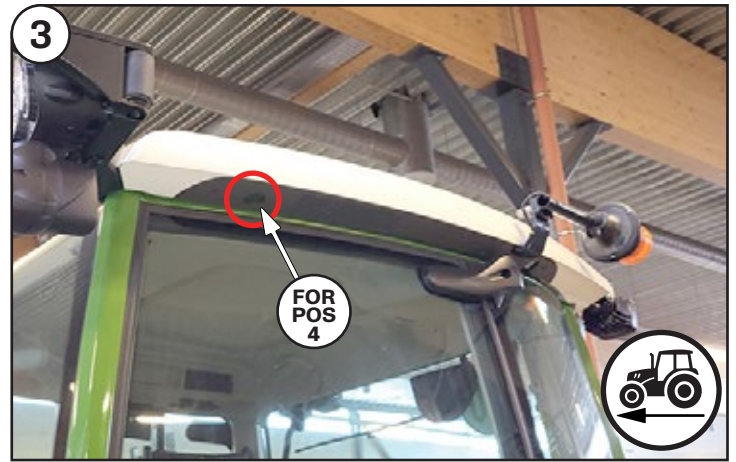
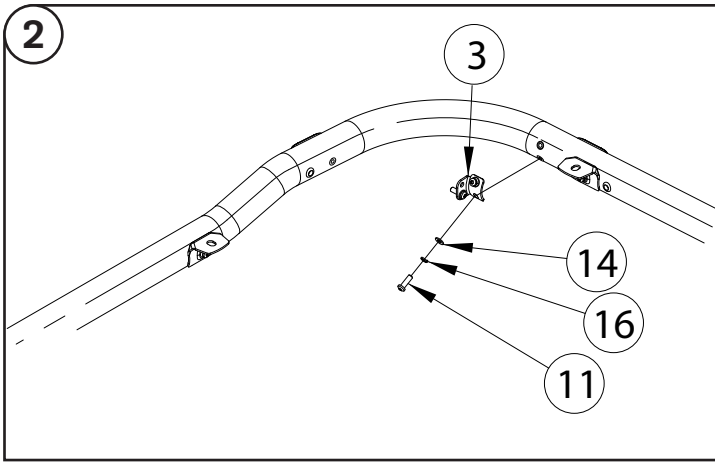
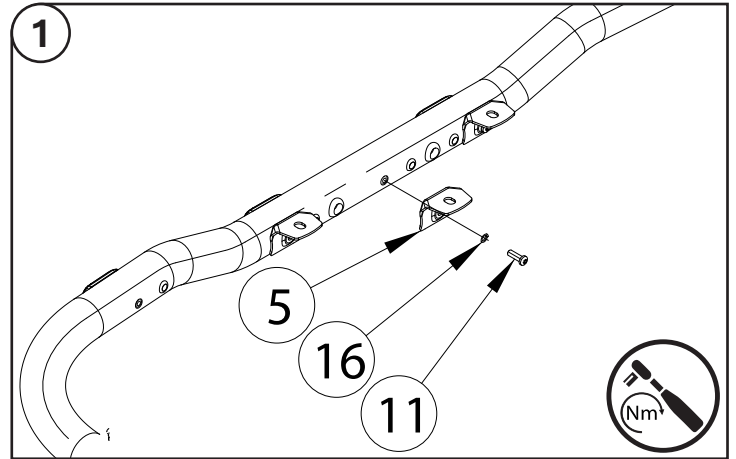
## NB!



To prevent cold welding, use cold weld grease or engine oil

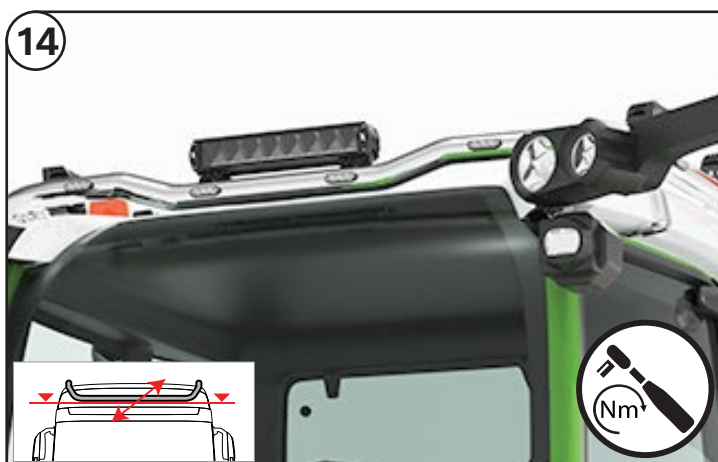
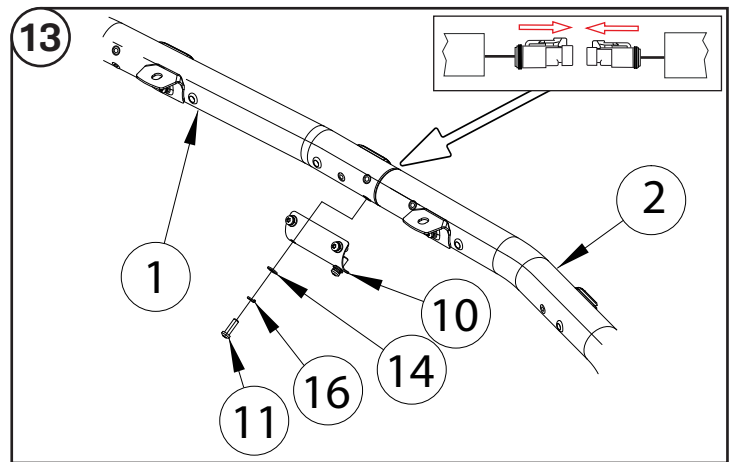
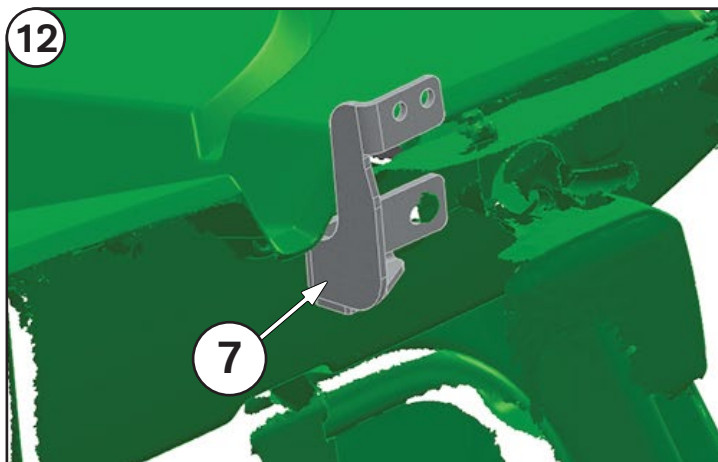
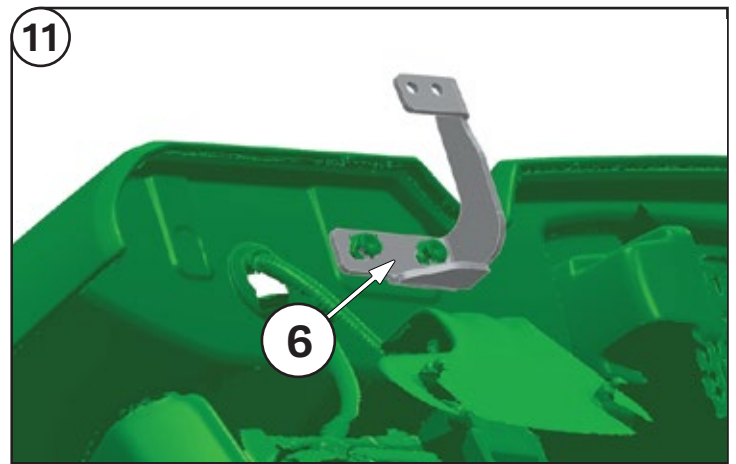
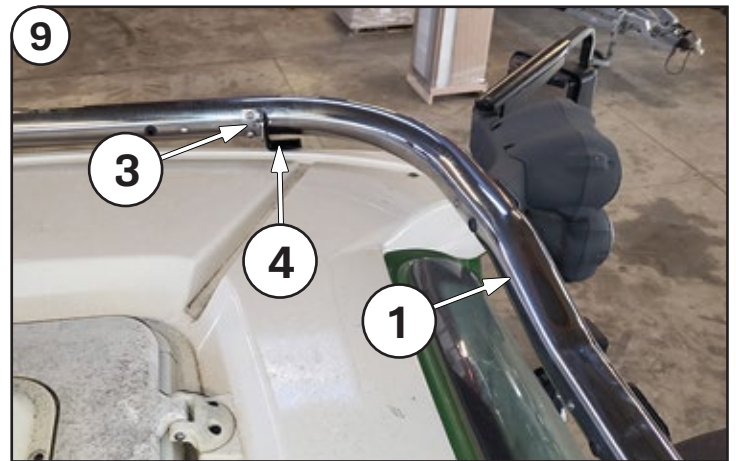
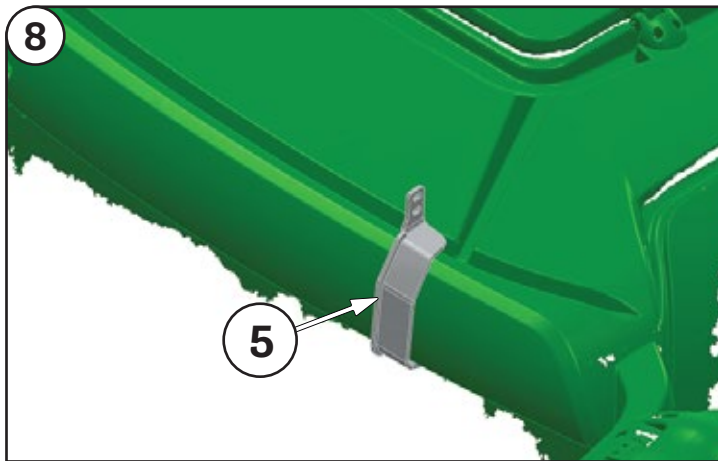


Installation of the lights must be carried out by a qualified electrician only



# Fendt 7

Art. 887300  
Lamp holder



Check and retighten the fasteners after each 10 000km



Clean and wash the product twice a month to prevent corrosion

In case of any defects or damage to the METEC product upon delivery, contact the reseller or point of sale where you made your purchase for resolution